

LACHIN Architects, apc

FirstLine Schools, Inc. Langston Hughes Elementary Classroom Building Addition

July 19, 2023

ADDENDUM NO. 2

This Addendum, applicable to work designated herein below shall be understood to be an Addendum and, as such, shall be included in the "Contract Documents" dated June 23, 2023.

Following are the changes, amendments, deletions, or additions to components of the "Contract Documents" as now written or drawn. All provisions of the General Conditions of the Contract for Construction, Supplementary Conditions, and other pertinent portions of sections in Division 1 through Division 33 of the Project Manual Specification shall apply to this Addendum.

GENERAL

Item No. 1: **CLARIFICATION** All bids are to be submitted in accordance with section 5.3 of the Instructions to Bidders. Additionally, bidders have the option to submit bids electronically in accordance with Louisiana Revised Statute 38:2212.E.(1), et seq. Bids submitted electronically shall be submitted at www.centerlinebidconnect.com and must be fully uploaded by the same deadline as hard copy bids. Bids sent by email will not be accepted.

SPECIFICATIONS

Item No. 2: In Specification Section 06 15 33, **CHANGE** the footer on each page of the specification from "Wood Decking" to "Composite Decking and Aluminum Railing".

ARCHITECTURAL DRAWINGS

Item No. 3: **REMOVE** the following sheet from the drawing set:
A601 – Opening Schedules

ELECTRICAL DRAWINGS

Item No. 4: **REPLACE** the following sheets with the revised sheets included in this addendum:
E001 Electrical Site Plan
E201 Electrical Details

NOTE: It should be assumed by the Contractor that Entergy will cover all costs associated with introducing a new power feed from De Saix Boulevard to the classroom building, **AND** relocating the neighbor's power feed which is currently hanging over the Langston Hughes property. The new power feed and neighbor's power feed is to be located on the nearest pole to the northwest of the Langston Hughes property.

QUESTIONS

Item No. 5:

Q: I saw it was listed that the pre-bid meeting on 7/10 was mandatory. Can you send me a copy of the sign-in sheet? Or tell me where it is posted online?

A: All documents, including the sign-in sheet are available at www.firstlineschools.org/rfps and www.centerlinebidconnect.com.

Q: Can you give more clarity in what the finish will be for the railing system at stairs/ramp?

A: The drawings and details on sheet A503 identify a prefinished aluminum railing system, further information on acceptable manufacturers and basis of design are included in Specification 06 15 33, "Composite Decking and Aluminum Railing".

PRIOR APPROVALS

Listed below are manufacturers who are recognized as capable of producing products or equipment equal to those specified. Products or equipment will be considered acceptable, providing the equipment meets, or exceeds the specification requirements, fits the available space, and has the capacity and performance requirements. Fixtures/equipment shall also be similar in appearance, construction, and performance (as published by an independent laboratory report).

The listed (prior-approved) equipment is not given with respect to any specific model, series, catalog number, etc. Suppliers are cautioned that before their equipment is approved, it will be incumbent upon them to demonstrate to the architect or engineer, that the product or equipment is (in fact) equal to the requirements specified and conforms fully to all specification requirements. For light fixtures, point-to-point lighting calculations and/or fixture samples may be requested during the shop drawing review to verify compliance with specifications.

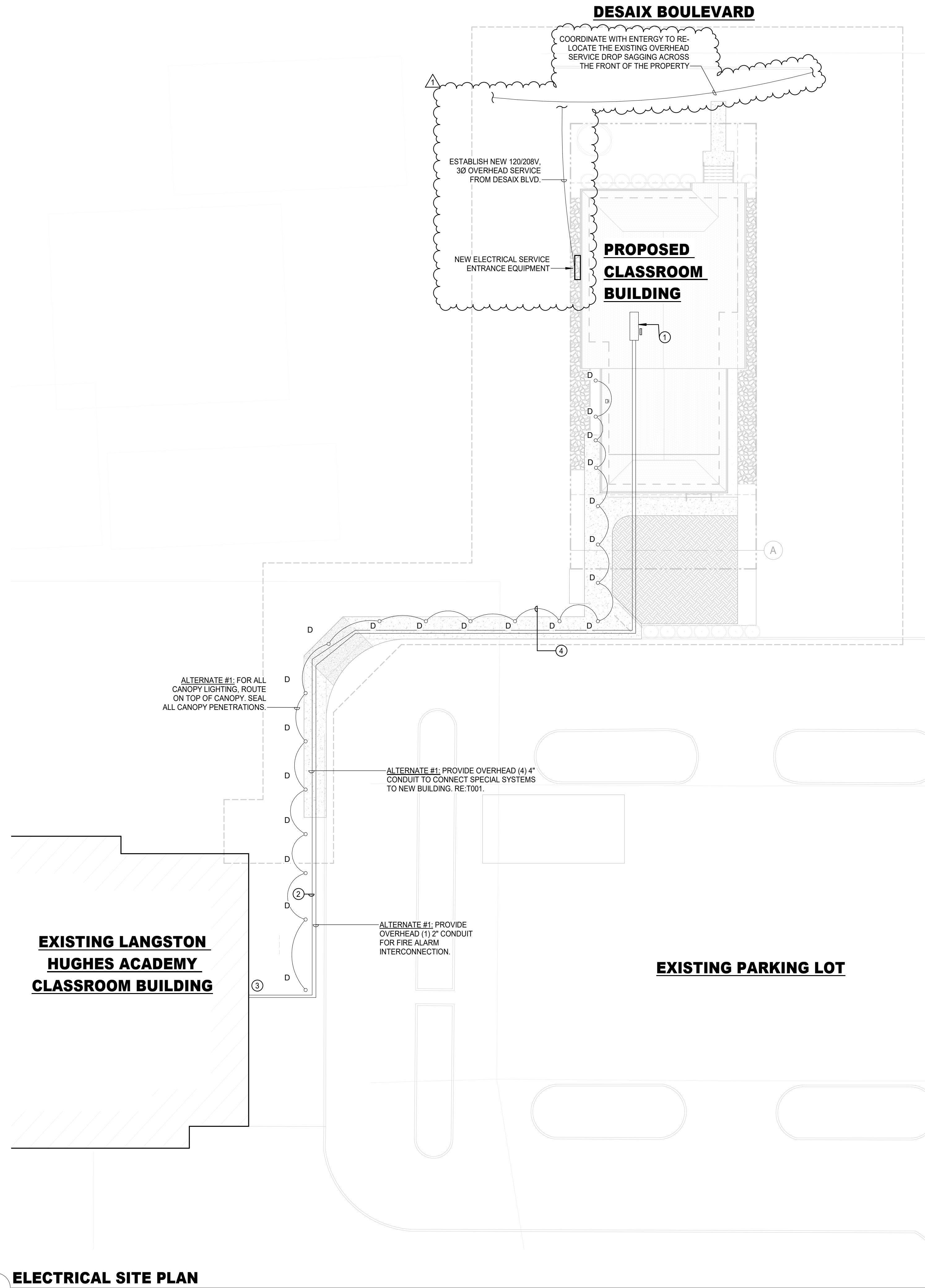
ROOM IDENTIFICATION SIGNAGE

Manufacturer – 290 Sign Systems; Product – Plaque 25 / Klik

LIGHTING FIXTURES

<u>Fixture</u>	<u>Manufacturer/ Product</u>
A	Metalux - 22CZSCT3-UNV
A	Day Brite - 2EVG43L8TW-2-D-UNV-DTW
B	Halo Commercial - HC410D010 HM40525835 41MDH
B	Lightolier - 4RN / P4RDL10
C	Metalux - 4SLSTP4035DD-UNV
C	Day Brite - FSS440L840-UNV-DIM
D	Spitzer - SMD12R209SWHE
D	Fc Lighting - 4RN / P4RDL10WH
D-ALT	ASD Lighting - ASD-LFMDR-MV-12D20CC-NK
H	HALO-Rec - LCR408RD9FSE020 HL4RSMF
H	Lightolier - 4RN / P4RDL10WH
W	Stonco - WP60-SCT-G2-10-BZ
X	Emerg Lite - ELXN400RN

END OF ADDENDUM

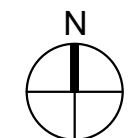


ELECTRICAL KEYED NOTES

- 1 APPROXIMATE LOCATION OF ELECTRICAL ROOM 4. RE:E101 FOR STUB UP LOCATIONS
- 2 BREAK/PATCH CONCRETE SIDEWALK. CONDUIT SHALL VERTICALLY RISE INTO 2ND FLOOR CORRIDOR ACCESSIBLE CEILING SPACE. PENETRATE EXISTING EXTERIOR WALL AND SEAL OPENING.
- 3 CONTRACTOR SHALL ROUTE ALL SPECIAL SYSTEMS CABLING THROUGH THE 2ND FLOOR CORRIDOR ACCESSIBLE CEILING SPACE TO THE EXISTING ASSOCIATED SPECIAL SYSTEMS CONTROL PANELS. THE INTENDED ROUTE WILL REQUIRE SIGNIFICANT RISES AND FALLS WHERE ROUTING ABOVE THE CORRIDOR COMMONS AREAS. PROPERLY SUPPORT ALL CABLING WITH J HOOKS AND CONDUIT IN AREAS REQUIRED. IT IS THE CONTRACTORS RESPONSIBILITY TO OBSERVE THE CABLE ROUTE ON SITE PRIOR TO BIDDING THIS PROJECT. COORDINATE ALL ASPECTS OF THE ACTUAL CABLING AND ASSOCIATED INTER-CONNECTIONS WITH THE TECHNOLOGY DRAWINGS AND SPECIFICATIONS.
- 4 ALTERNATE #1: CIRCUIT CANOPY LIGHTING TO BREAKER 33 IN NEW PANEL "LA". RE:E201.

ALTERNATE INFORMATION

1. BASE BID: SPECIAL SYSTEMS AND FIRE ALARM SHALL BE PROVIDED VIA WIRELESS CONNECTION TO EXISTING SYSTEMS IN MAIN SCHOOL BUILDING. REFERENCE TECHNOLOGY DRAWINGS FOR MORE INFORMATION.
2. ALTERNATE #1: SPECIAL SYSTEMS AND FIRE ALARM CONDUIT SHALL BE MOUNTED ON TOP OF CANOPY AND ROUTED INTO THE NEW BUILDING ACCESSIBLE CEILING SPACE TO THE ELECTRICAL/IT ROOM.
3. ALTERNATE #1: PROVIDE CANOPY LIGHTING AS INDICATED



1 ELECTRICAL SITE PLAN
Scale: 1/16" = 1'-0"

LACHIN Architects, apc
Architecture . Planning . Project Management

LA

STATE OF LOUISIANA
JACOB TRUAX
License No. 40358
PROFESSIONAL ENGINEER
7/18/23

NO.	DATE	DESCRIPTION

Firstline Schools, Inc.
Langston Hughes Elementary Classroom Building Addition

ELECTRICAL SITE PLAN

PROJECT No:	2207
CHECK BY:	SP
DRAWN BY:	JP
DATE:	04/21/2023
SHEET No:	

SALASOBRIEN
| expect a difference |

2380 Towne Center Boulevard, Suite 1210
Baton Rouge, Louisiana 70806
225.766.8002 | Registration No. 2964
SOBE Project No. 2022-02964

E001

NO.	DATE	DESCRIPTION
1	07/18/2023	REVISION

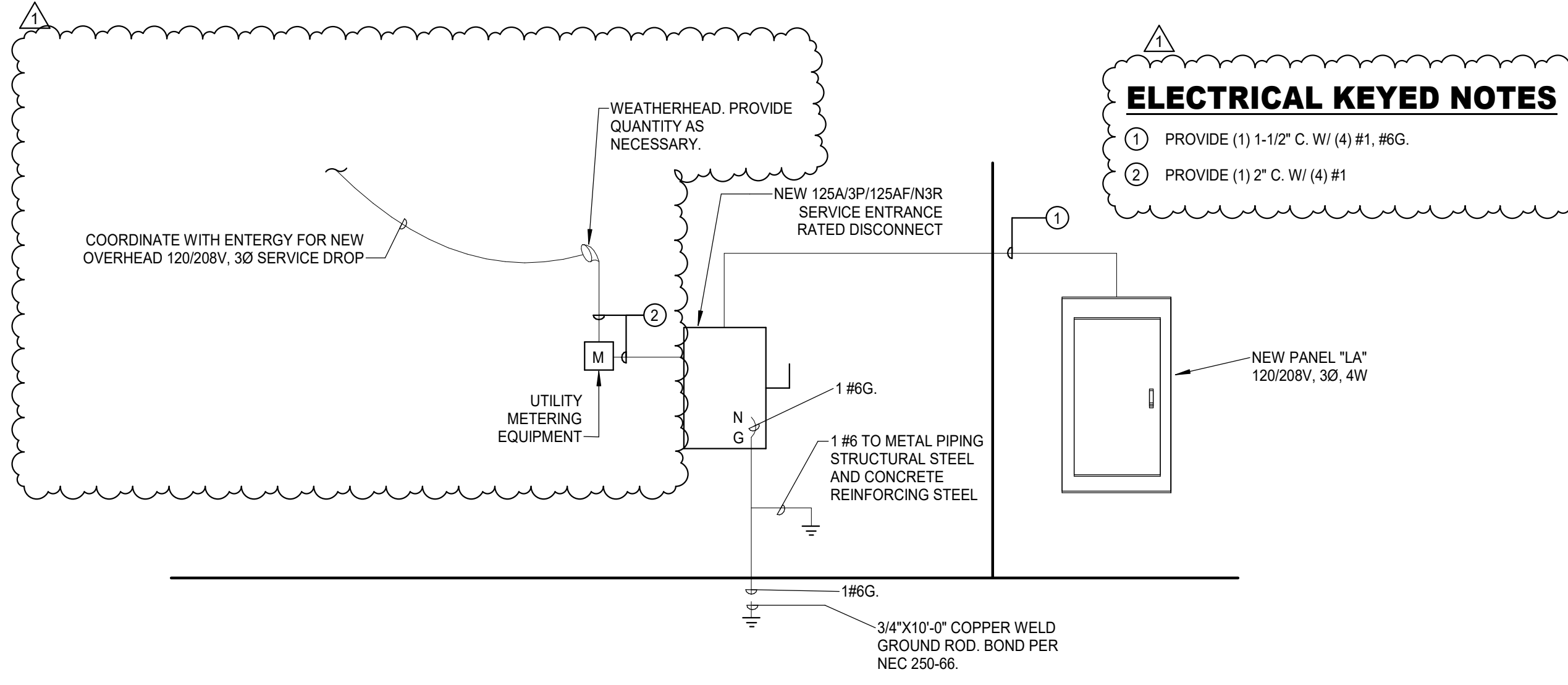
Firstline Schools, Inc.
Langston Hughes Elementary Classroom Building Addition

Branch Panel: LA
Location: Closet 5
Supply From:
Mounting: Surface

Volts: 120/208 Wye
Phases: 3
Wires: 4
Phase in kVA

A.I.C. Rating: 10,000
Enclosure: NEMA 1
Mains: 125A

NOTE	CKT	CIRCUIT DESCRIPTION	WIRE	GND	CONDUIT	BKR	A	B	C	BKR	CONDUIT	GND	WIRE	CIRCUIT DESCRIPTION	CKT	NOTE
	1	CLASSROOM B	(2)#12	#12	1/2"	20	1	1.0 / 0.5		1	20	1/2"	#12	(2)#12 BREAKROOM LIGHTING	2	
	3	LOBBY LIGHTING	(2)#12	#12	1/2"	20	1	0.2 / 0.2		1	20	1/2"	#12	(2)#12 ELECTRICAL CABINET...	4	
	5	CLASSROOM A	(2)#12	#12	1/2"	20	1		1.1 / 0.5	1	20	1/2"	#12	(2)#12 EXTERIOR LIGHTING	6	
	7	CLASSROOM A RECEPTACLES	(2)#12	#12	1/2"	20	1	0.9 / 1.3		1	20	1/2"	#12	(2)#12 LOBBY RECEPTACLES	8	
	9	CLASSROOM B RECEPTACLES	(2)#12	#12	1/2"	20	1	0.9 / 1.1		1	20	1/2"	#12	(2)#12 EXTERIOR RECEPTACLES	10	
	11	CLASSROOM B RECEPTACLES	(2)#12	#12	1/2"	20	1		0.7 / 0.5	1	20	1/2"	#12	(2)#12 MOTORIZED DAMPER	12	
	13	CLASSROOM A RECEPTACLES	(2)#12	#12	1/2"	20	1	0.7 / 3.3		2	35	3/4"	#10	(2)#8 AHU-1	14	
	15	EAH-1	(2)#12	#12	1/2"	20	1	0.0 / 3.3		1	20	1/2"	#12	(2)#12 CANOPY LIGHTING	16	
	17	FACP	(2)#12	#12	1/2"	20	1		0.5 / 0.5	1	20	1/2"	#12	(2)#12 CANOPY LIGHTING	18	
	19	AHU-2	(2)#4	#4	1"	50	2	5.2 / 5.2		2	50	1"	#4	(2)#4 AHU-3	20	
	21							5.2 / 5.2						(2)#4 AHU-3	22	
	23	CU-1	(2)#12	#12	1/2"	20	2	2.0 / 2.0		2	25	3/4"	#10	(2)#10 CU-2	24	
	25							2.0 / 0.4		1	20	1/2"	#12	(2)#12 TT&B & TELECOM RACK	26	
	27	CU-3	(2)#10	#10	3/4"	25	2		2.0 / 0.2	1	20	1/2"	#12	(2)#12 MEZZANINE LIGHTING	30	
	29									1	20	1/2"	#12	(2)#12 CIRC PUMP	32	
	31	REFRIDGERATOR	(2)#12	#12	1/2"	20	1	0.2 / 0.2		1	20	1/2"	#12	(2)#12 CLASS RECEPTACLES	34	
	33	SPARE	--	--	--	20	1	0.0 / 0.7		1	20	--	--	SPARE	36	--
	35	SPARE	--	--	--	20	1		0.0 / 0.0	1	20	--	--	SPARE	38	--
	37	SPARE	--	--	--	20	1	0.0 / 0.0		1	20	--	--	SPARE	40	--
	39	SPARE	--	--	--	20	1	0.0 / 0.0		1	20	--	--	SPARE	42	--
	41	SPARE	--	--	--	20	1	0.0 / 0.0		1	20	--	--	SPARE	44	--
Total Load:							21.7 kVA	18.6 kVA	9.7 kVA							
Total Amps:							193 A	166 A	81 A							
Load Classification	Connected Load	Demand Factor	Estimated Demand	Panel Totals												
Cooling	12.0 kVA	0.01%	0.0 kVA	Total Conn. Load:	49.7 kVA											
HVAC	28.0 kVA	100.00%	28.0 kVA													
Lighting	3.4 kVA	125.00%	4.3 kVA	Total Est. Demand:	39.3 kVA											
Miscellaneous	1.0 kVA	100.00%	1.0 kVA													
Other	0.0 kVA	0.00%	0.0 kVA	Total Conn. Current: 138 A												
Receptacles	7.0 kVA	100.00%	7.0 kVA	Total Est. Demand Current: 109 A												



1 ELECTRICAL RISER DIAGRAM
Scale: NTS